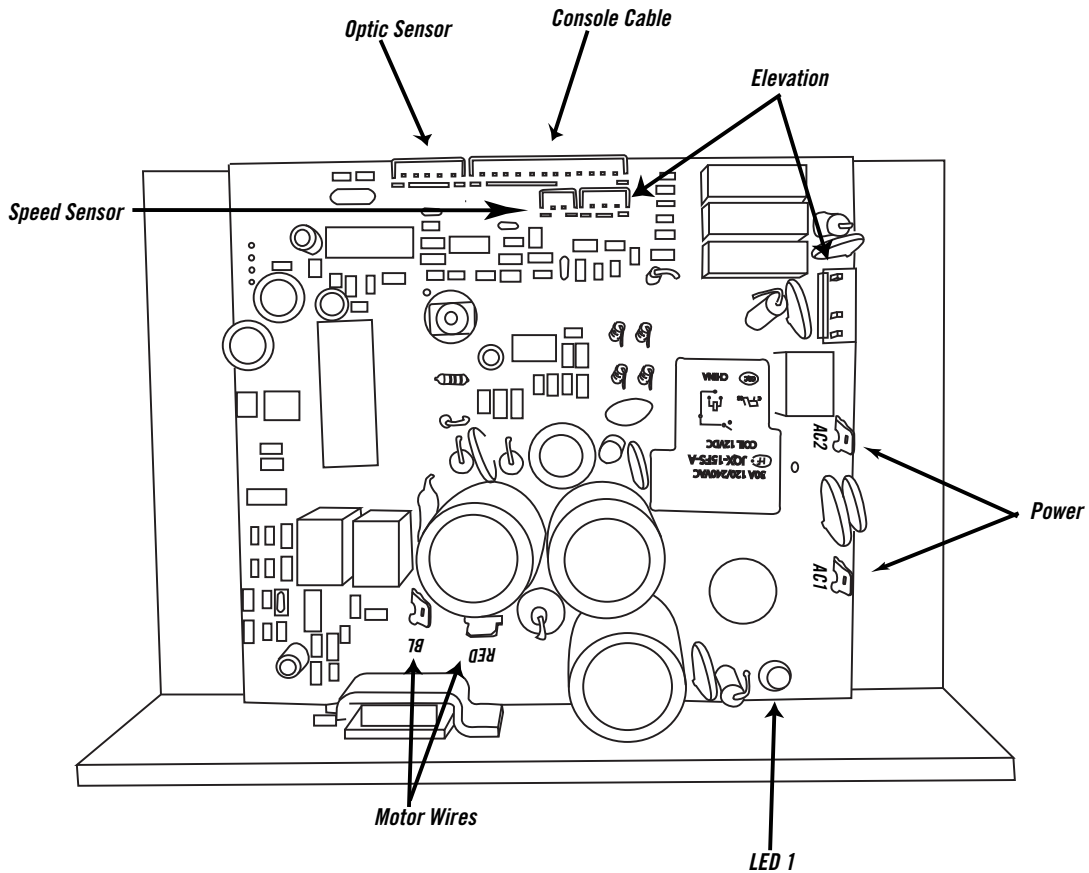


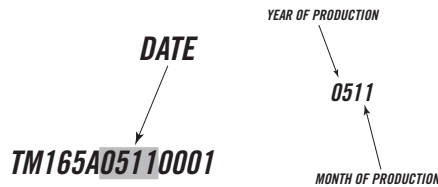
NEW MOTOR CONTROL BOARD



A mid-production change involving the motor control board has occurred effective (11/01/05):

Units with 2.75 HP Drive Motors will not be affected by this production change. (PST8 and 5.2T)

Please check the serial number (Pictured Below) to verify the production change.



Important Note: Although this motor control board looks slightly different from motor control board that is in the unit, they are completely compatible. Please follow the instructions for installation that are included with every shipment of the motor control board. Please contact Horizon Fitness Customer Tech Support with any questions 800.244.4192.

Thank You