

Console Cable Replacement (EX-22, EX-33, EX-44, CSE 3.5, CSE 4.5, EG5)

Tools Required:

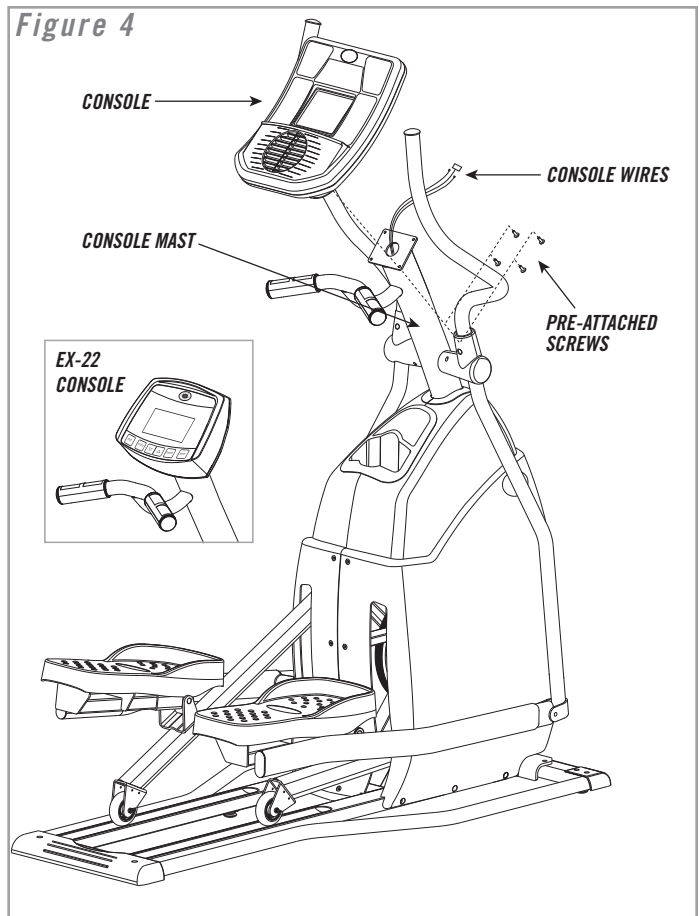
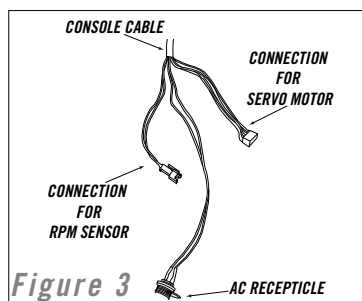
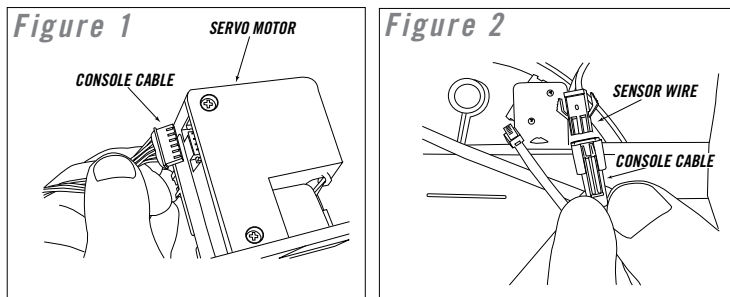
- Philips Screwdriver
- 13mm Combination Wrench
- 5mm Allen Wrench

Procedure:

- 1) Unplug power supply from elliptical.
- 2) Unscrew AC receptacle attachment nut and remove side covers.
- 3) Disconnect console cable from the speed sensor and servomotor (Figures 1, 2 & 3).
- 4) Remove the console from the console mast and unplug the console cable from the console (Figure 4).
- 5) Attach the new console cable to the old console cable and fish the cable through the console mast.

IMPORTANT

In order to fish the console cable easily, you may need to detach the screws that hold the water bottle bracket in place.



- 6) Connect new console cable to speed sensor and servomotor.
- 7) Replace side covers, making sure to install AC receptacle and nut.